

## NHS Case Study

# Modernising surgical operations

## University Hospitals of Norfolk & Norwich

### Challenge

University Hospitals of Norfolk & Norwich faced a significant challenge with their ageing fleet of Eschmann operating tables, which were around 20 years old and could no longer be adequately maintained. This situation posed a risk to patient safety and threatened the continuity of surgical operations due to the unavailability of spare parts.

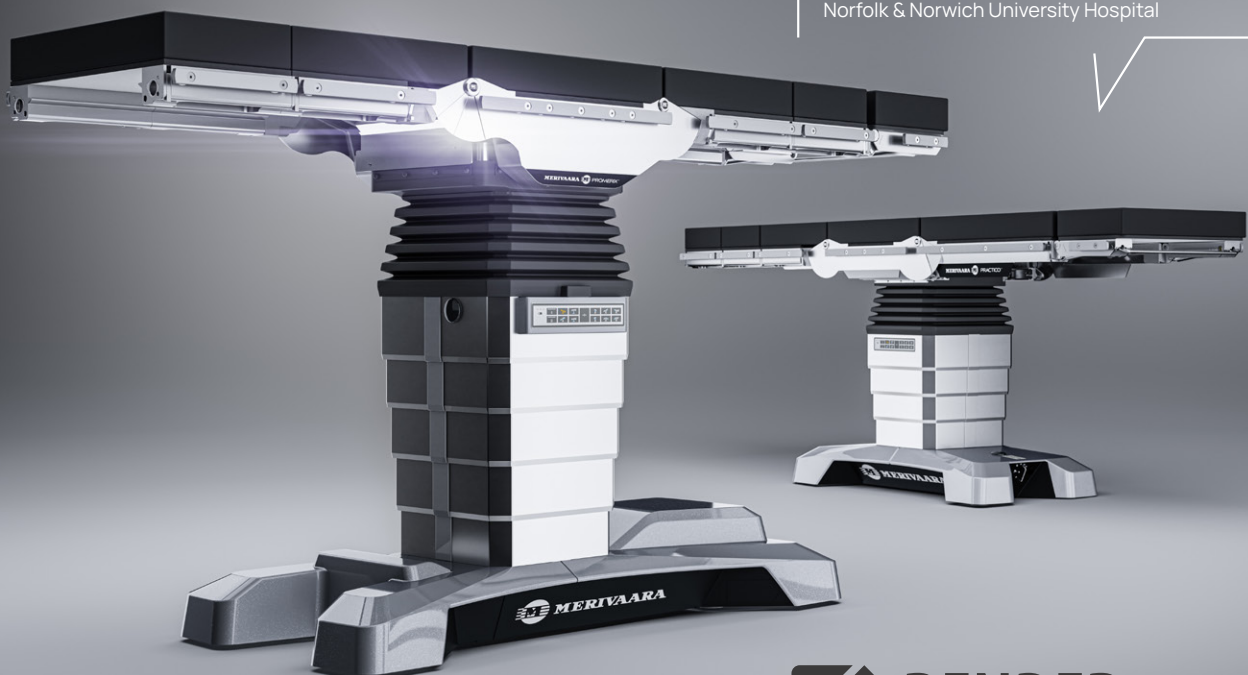
The hospital was in need of modern surgical tables that mirrored the functionality of their old ones but incorporated modern features to enhance operational efficiency and safety.

### Highlights

- A lower working height to improve ergonomic access for surgeons.
- Anti-collision features to prevent damage to the table or injury.
- A longer traversing table top which facilitates better access for C-arm procedures.
- The ability to fit UK Rails as standard, allowing the hospital to utilise all existing side supports and reduce expenditure.

The Practico is now being used in Robotic Surgery covering Gynae, Thoracic, ENT and Colo-Rectal and they are also used as a general surgery table throughout the department. The ergonomics and functions of the tables are an improvement of our own and we are very much enjoying our new operating tables!

**Perioperative Equipment Lead**  
Norfolk & Norwich University Hospital



# Modernising surgical operations

## Solution

The chosen solution was the Smarter Practico table, known for its durability and advanced features.

Bender identified the worst-performing tables and prioritised them for replacement. This approach was financially considerate, as it recognised the hospital's limited funds.

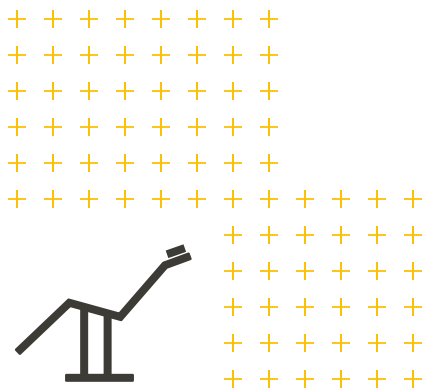
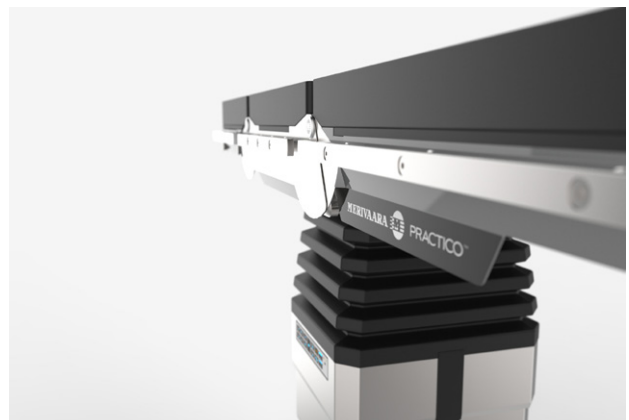
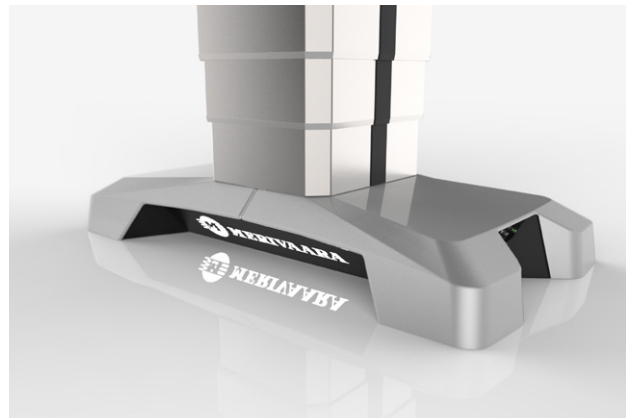
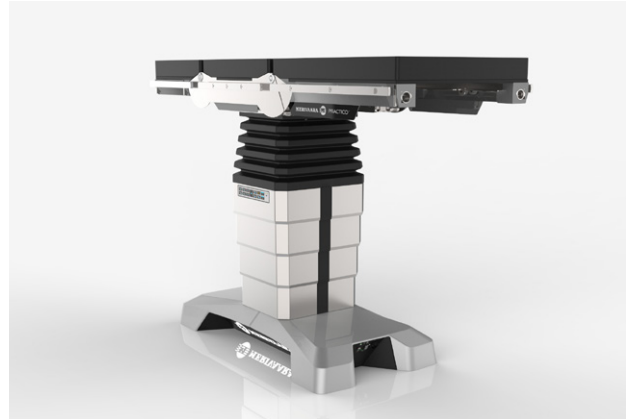
Initially, a trial involving both the Grand Promerix and Smarter Practico tables was conducted, focusing on collecting extensive feedback from various departments. The SP model was eventually selected for its superior return on investment and specific features that best met the hospital's needs.

## Outcomes

The installation of the new Smarter Practico tables has significantly improved the operational capacity of the surgical departments. Not only have these tables reduced the risk of equipment failure, but they have also been praised for their accessibility and functionality by other departments, including the robotics theatre.

The upgrade has notably boosted morale among the surgical teams, alleviating daily pressures and enhancing overall workplace satisfaction.

Following the successful trial and subsequent feedback, plans are underway to install additional Smarter Practico tables across more theatres within the hospital, further consolidating the hospital's capabilities to handle a wider array of surgical procedures, especially in bariatric surgery.



## Bender UK

The Old Tannery  
Low Mill Business Park  
Ulverston  
Cumbria LA12 9EE

Tel.: +44 (0) 1229 480123  
Tel ROI.: +353 1 5060611  
[www.bender-uk.com](http://www.bender-uk.com)